

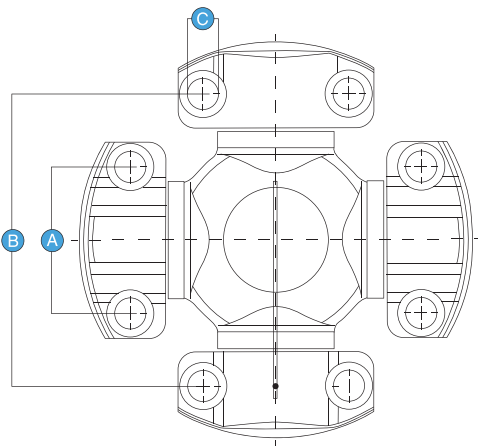
Torque by Series

Size	Tcs (Nm)	Tcs (lb. ft.)
4C	3280	2419
5C	5650	4167
6C	7230	5332
7C	10700	7891
8C	15500	11432
8.5C	20300	14972
9C	27400	20209
10C	39700	29281
11C	41600	30682
12C	62200	45876
12.5C	82800	61070
14C	120600	88950
14.5C	108200	79804
15C	75400	55612

Tcs - Functional Limit Torque

This represents the maximum torque possible to be transferred through the driveshaft without any lowering in the function of the driveshaft.

"C" Series Identification



Series	A	B	C
4C	36.52mm (1.44 in.)	87.32mm (3.44 in.)	8.75mm (0.34 in.)
5C	42.90mm (1.69 in.)	88.90mm (3.50 in.)	10.50mm (0.41 in.)
6C	42.90mm (1.69 in.)	114.30mm (4.50 in.)	10.50mm (0.41 in.)
7C	49.20mm (1.94 in.)	117.48mm (4.63 in.)	13.50mm (0.53 in.)
8C	49.20mm (1.94 in.)	174.60mm (6.87 in.)	13.50mm (0.53 in.)
8.5C	71.44mm (2.81 in.)	123.83mm (4.88 in.)	13.50mm (0.53 in.)
9C	71.44mm (2.81 in.)	168.25mm (6.62 in.)	13.50mm (0.53 in.)
10C	92.10mm (3.63 in.)	165.10mm (6.50 in.)	17.00mm (0.67 in.)
11C	88.90mm (3.50 in.)	172.70mm (6.80 in.)	20.00mm (0.79 in.)
12C	92.10mm (3.63 in.)	241.35mm (9.50 in.)	15.00mm (0.59 in.)
12.5C	92.00mm (3.62 in.)	227.00mm (10.63 in.)	19.00mm (0.75 in.)
14C	134.88mm (5.31 in.)	270.00mm (10.63 in.)	19.00mm (0.75 in.)
14.5C	107.00mm (4.21 in.)	252.00mm (9.92 in.)	24.00mm (0.94 in.)
15C	100.00mm (3.938 in.)	273.00mm (10.748 in.)	21.00mm (.827 in.)



*Serving the Trucking
Industry for over 75 years.*

WWW.MACHINESERVICE.COM

Green Bay 54304
1000 Ashwaubenon St.
Parts: (920) 339-3009
800-677-8711

Milwaukee 53186
W229N 1823 Westwood Drive
Parts: (262) 521-3234
800-242-2115