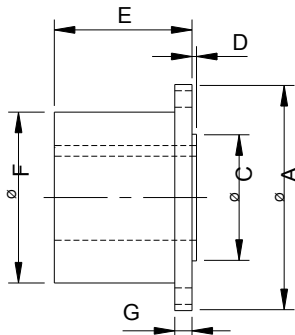
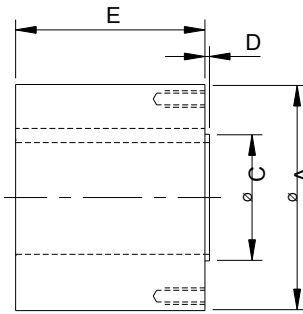




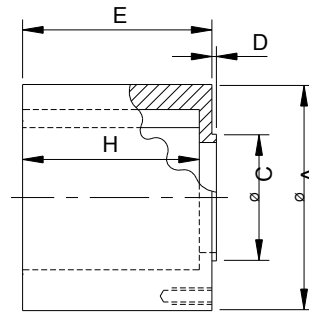
COMPANION FLANGES FOR HIGH BEARING LIFE SERIES:



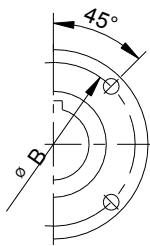
"SF" STYLE
Standard flange



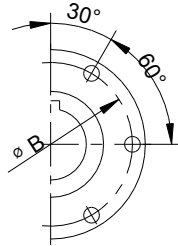
"SLF" STYLE
Special large
flange



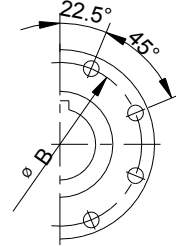
"SLFOS" STYLE
Special large flange
oversized



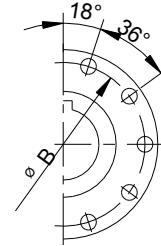
4-hole flange



6-hole flange



8-hole flange



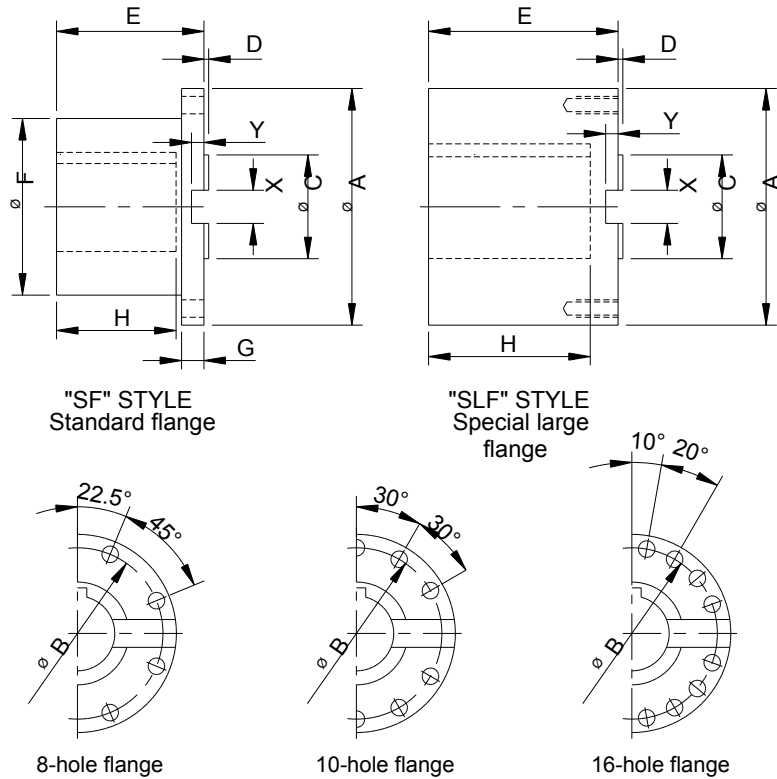
10-hole flange

Dimensions:

Flange	A	mm	90	100	120	150	180-8	180-10	225	250	285	315	350	390	435
Bolt circle	B	mm	74.5	84	101.5	130	155.5	155.5	196	218	245	280	310	345	385
Pilot	C	mm	47	57	75	90	110	110	140	140	175	175	220	250	280
Pilot Height	D	mm	2.2	2.2	2.2	2.5	2.7	2.7	4	5	6	6	7	7	9
Hardware		mm	M8	M8	M10	M12	M14	M16	M16	M18	M20	M22	M22	M24	M27
# Bolts			4	6	8	8	8	10	8	8	8	8	10	10	10
SF Style (Standard Flange)															
Max. Bore		In	1.562	1.750	2.188	2.875	3.500	3.500	4.500	4.937	5.562	6.500	7.250	8.250	9.125
Std Length	E	in	2.00	2.00	2.50	3.00	4.00	4.00	5.50	6.00	7.00	8.00	9.00	10.00	11.00
Hub Dia	F	in	2.417	2.562	3.250	4.312	5.187	5.125	6.687	7.437	8.406	9.687	10.88	12.09	13.47
Web	G	in	.312	.375	.375	.375	.500	.500	.625	.750	.812	.875	1.00	1.12	1.25
SLF Style (Special Large Flange)															
Max. Bore		In	1.750	2.000	2.750	3.375	4.125	4.125	5.250	5.250	6.500	6.500	8.250	9.375	10.50
Std Length	E	in	2.50	2.50	3.00	4.00	4.50	4.50	7.25	8.25	9.375	10.25	11.25	As re- quired	As re- quired
SLF-OS Style (Special Large Oversized Flange)															
Max. Bore		In	2.250	2.625	3.125	3.937	4.500	4.500	5.875	6.562	7.500	8.250	9.250	10.25	11.50
Std Length	E	in	2.50	2.50	3.00	4.00	4.50	4.50	7.25	8.25	9.375	10.25	11.25	As re- quired	As re- quired
Through Hole	H	In	2.375	2.375	2.875	3.750	4.250	4.250	7.00	7.875	9.000	9.875	10.75	-	-



COMPANION FLANGES FOR HIGH TORQUE SERIES:



Dimensions:

Flange	A	mm	225	250	285	315	350	390	435	480	550
Bolt circle	B	mm	196	218	245	280	310	345	385	425	492
Pilot	C	mm	105	105	125	130	155	170	190	205	250
Pilot Height	D	mm	4.5	5	6	7	7	8	10	12	12
Hardware		mm	M16	M18	M20	M22	M22	M24	M27	M30	M30
# Bolts			8	8	8	10	10	10	16	16	16
Key Width	X	mm	32	40	40	40	50	70	80	90	100
Key Depth	Y	mm	9	12.5	15	15	16	18	20	22.5	22.5
SF Style (Standard Flange)											
Max. Bore		In	4.437	4.937	5.562	6.437	7.250	8.000	8.937	9.375	11.500
Std Length	E	in	5.500	6.000	7.000	8.000	9.000	10.000	11.000	As required	As required
Hub Dia.	F	in	6.687	7.437	8.375	9.656	10.843	12.078	13.453	14.844	17.484
Web	G	in	.812	1.000	1.062	1.250	1.375	1.625	1.687	1.875	2.000
Through Hole	H	In	4.63	5.000	5.875	6.875	7.875	8.750	9.687	-	-
SLF Style (Special Large Flange)											
Max. Bore		In	5.875	6.625	7.500	8.250	9.125	10.250	11.375	12.500	14.250
Std Length	E	in	7.375	8.000	9.000	10.000	11.000	12.000	12.000	As required	As required
Through Hole	H	In	6.500	7.000	7.875	8.875	9.875	10.750	10.688	-	-